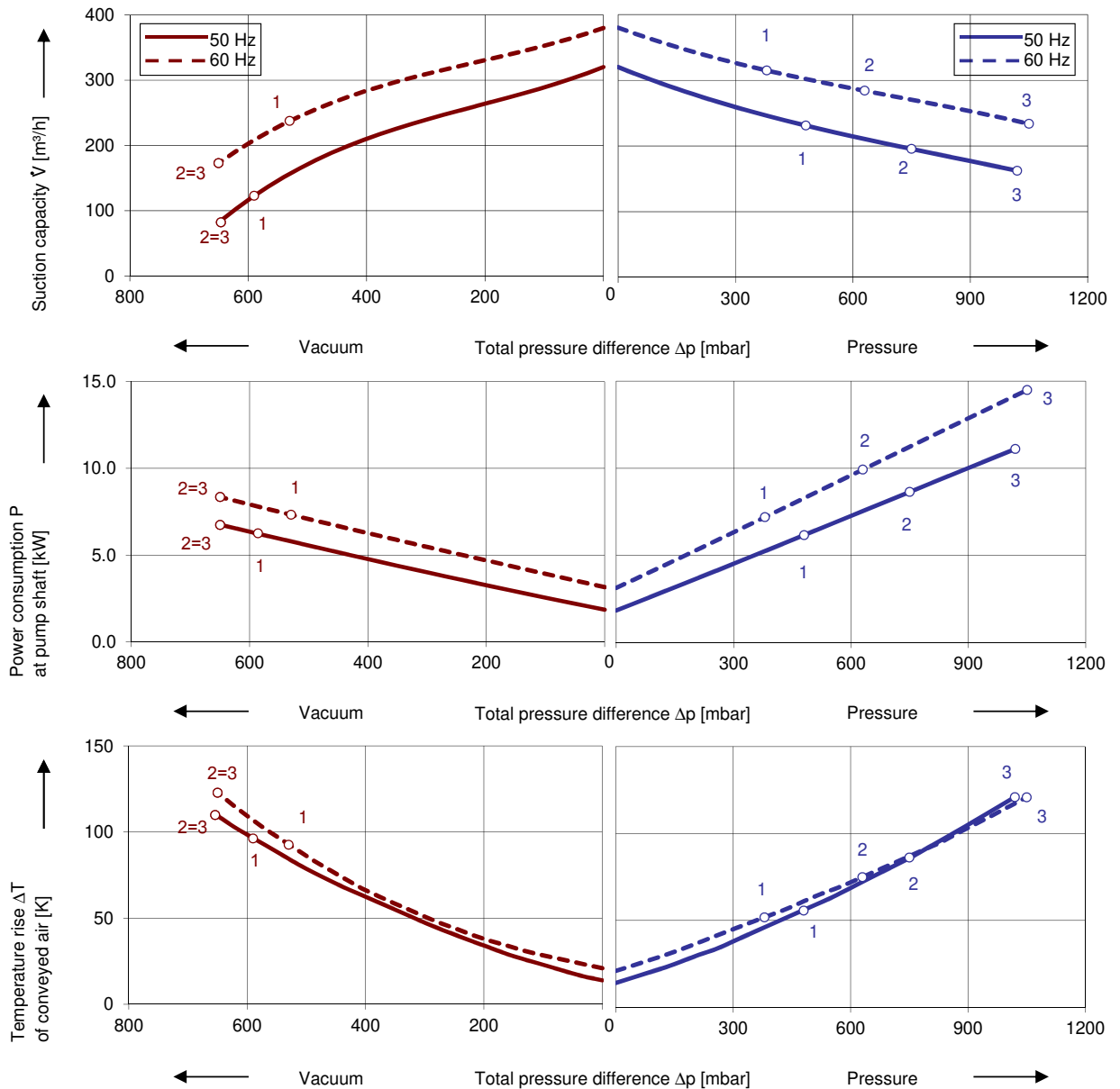


#### Performance curves

#### Vacuum operation

#### Compressor operation



The performance curves are based on air at a temperature of 15 °C and an atmospheric pressure of 1013 mbar with a tolerance of ± 10 %. The total pressure differences are valid for suction and ambient temperature up to 25 °C. For other conditions please get in touch with us.

All Greenco blowers can be used both as vacuum pump and compressor in continuous operation over the total performance curve range. The motors are available as standard in protection category IP 55 and insulation class F.

## Selection and ordering data

### Type 3RB 350-3

No.	Fre- quency Hz	Rated			Max. differential pressure <sup>2)</sup>		Sound pr. level <sup>3)</sup> dB(A)	Efficiency <sup>4)</sup>	Weight Approx kg	Order No.
		Voltage <sup>1)</sup>	Current	Power	Vacuum	Pressure				
		V	A	kW	mbar					
<b>IE3 3~ 50/60 Hz, IP55, Insulation material class F(UL certificate number E481218)</b>										
1	50	190-210△	23,5△	6,3	-590	480	70	IE3	126	3RB 350-3AAP41
	60	190-210 YY/ 380-420 Y	27,6 YY / 13,8Y	7,3	-530	380	75	IE3		
2	50	190-210△	30,8△	8,6	-650	750	70	IE3	142	3RB 350-3AAP51
	60	190-210 YY/ 380-420 Y	35,2YY / 17,6 Y	9,9	-650	630	75	IE3		
3	50	190-210△	46,4△	12,6	-650	1020	70	IE3	164	3RB 350-3AAP61
	60	190-210 YY/ 380-420 Y	52,8YY / 26,4 Y	14,5	-650	1050	75	IE3		
<b>IE3 3~ 50/60 Hz, IP55, Insulation material class F(UL certificate number E481218)</b>										
1	50	220-240△ / 380-420 Y	20,4△ / 11,8 Y	6,3	-590	480	70	IE3	126	3RB 350-3AAP46
	60	220-240YY / 440-480 Y	24,0 YY / 12,0 Y	7,3	-530	380	75	IE3		
2	50	220-240△ / 380-420 Y	26,8△ / 15,5 Y	8,6	-650	750	70	IE3	142	3RB 350-3AAP56
	60	220-240YY / 440-480 Y	30,6 YY / 15,3 Y	9,9	-650	630	75	IE3		
3	50	220-240△ / 380-420 Y	40,3△ / 23,3 Y	12,6	-650	1020	70	IE3	164	3RB 350-3AAP66
	60	220-240YY / 440-480 Y	46,0 YY / 23,0 Y	14,5	-650	1050	75	IE3		
<b>IE3 3~ 50/60 Hz, IP55, Insulation material class F(UL certificate number E481218)</b>										
1	50	380-420△ / 660-725 Y	11,8△ / 6,8 Y	6,3	-590	480	70	IE3	126	3RB 350-3AAQ47
	60	440-480△	12,0△	7,3	-530	380	75	IE3		
2	50	380-420△ / 660-725 Y	15,5△ / 8,9Y	8,6	-650	750	70	IE3	142	3RB 350-3AAQ57
	60	440-480△	15,3△	9,9	-650	630	75	IE3		
3	50	380-420△ / 660-725 Y	23,3△ / 13,4Y	12,6	-650	1020	70	IE3	164	3RB 350-3AAQ67
	60	440-480△	23,0△	14,5	-650	1050	75	IE3		
<b>IE3 3~ 50/60 Hz, IP55, Insulation material class F(UL certificate number E481218)</b>										
1	50	220-240△ / 380-420 Y	20,4△ / 11,8 Y	6,3	-590	480	70	IE3	126	3RB 350-3AAQ46
	60	440-480 Y	12,0 Y	7,3	-530	380	75	IE3		
2	50	220-240△ / 380-420 Y	26,8△ / 15,5 Y	8,6	-650	750	70	IE3	142	3RB 350-3AAQ56
	60	2 440-480 Y	15,3 Y	9,9	-650	630	75	IE3		
3	50	220-240△ / 380-420 Y	40,3△ / 23,3 Y	12,6	-650	1020	70	IE3	164	3RB 350-3AAQ66
	60	440-480 Y	23,0 Y	14,5	-650	1050	75	IE3		

1) In case of frequency converter operation the standard motor insulation system is suitable for converter input voltages up to 500 V.

2) Relief valves available for limiting differential pressure.

3) Measuring surface sound pressure level acc. to EN ISO 3744, measured with an equivalent unit at a distance of 1 m. The pump is throttled to an average suction pressure, with piping connected, but no relief valves fitted, tolerance ±3 dB (A).

4) The motors according to NEMA MG1-12. NP=NEMA Premium; NEMA Premium includes IE3.



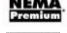


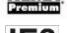

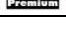
All GREENCO blowers match the 2006/42/EC (machinery) and 2014/35/EU (low voltage) directives and the EN 60034 norm "Rotating electrical machines".

Service factor (SF) and motor efficiency according NEMA MG1-12.

Voltage tolerances for three phase motors are +/-10%.

The frequency tolerance is +/- 2 % maximum.

## Motor for alternate voltages

Voltage range		Efficiency <sup>4)</sup>	60 Hz	3RB ...-3 . □ . □
50 Hz	60Hz			
<b>3~</b>				
200 V△	200 V YY / 230 V△ / 400 VY		•	P 1
190-210 V△	190-210 VYY / 220-240 V△ / 380-420VY		•	
200 V YY / 230 V△ / 400 VY	230 V YY / 460 VY		•	P 6
190-210 VYY / 220-240 V△ / 380-420VY	220-240 VYY / 440-480VY		•	
475-525 V Y	550-600 V Y		•	Q 3
475-525 V△	550-600 V△		•	Q 5
220-240 V△ / 380-420VY	440-480VY		•	Q 6
400 V△ / 690 V Y	460 V△		•	Q 7

Changes in particular of the quoted performance curve, data and weights may occur without prior notice. The data given do not constitute an obligation from our side to deliver as shown.